



Samtrade FX Metatrader 4 (MT4) Starter Guide for Windows



Table of Contents

Installation	3
Metatrader 4 Overview.....	4
Change Language	5
Open Demo Account	6
Login to Demo Account	11
Login to Live Account	13



Installation

1. Download Samtrade FX’s MetaTrader 4 Client Terminal platform from Samtrade FX website or by clicking the link below:

[Download MetaTrader 4 for Windows](#)

2. Launch the installation file the same way you launch any Windows program.



3. Check on the box “**Yes, I agree with all terms of this license agreement**” and click **Next**
4. The installation will continue
5. Once completed, the Metatrader 4 will launch.



Metatrader 4 (MT4) Overview

Here is the overview of what the MT4 platform look like.

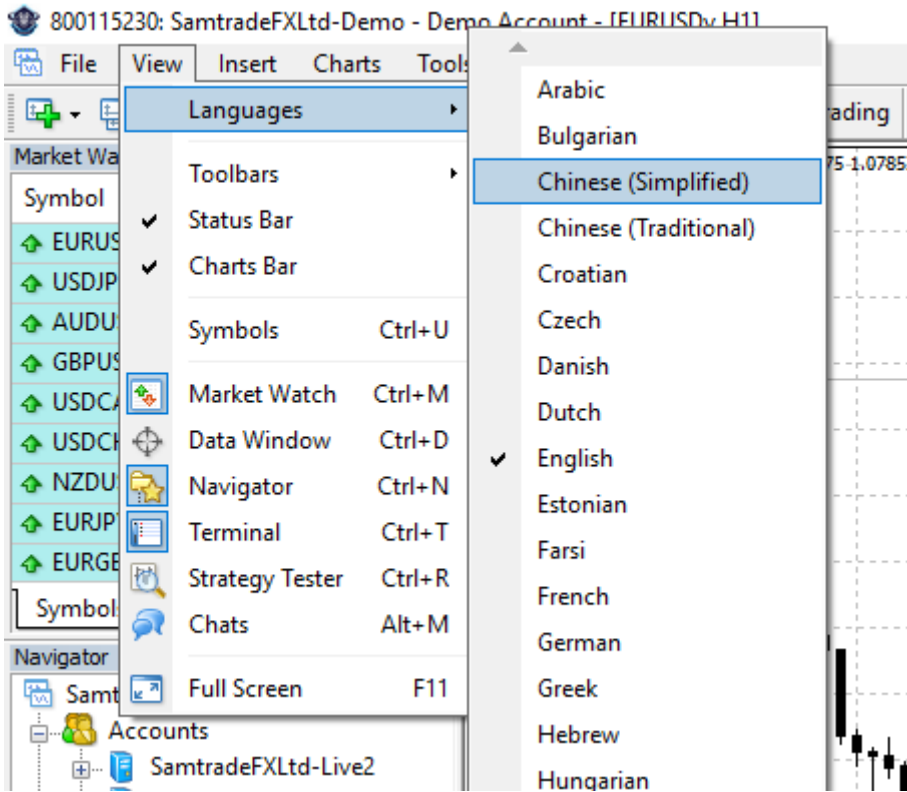
- **Main menu** (access to the program menu and settings).
- **Toolbars** (quick access to the program features and settings)
- **Market Watch** window (real-time quotes for the specified instruments).
- **Navigator** window (quick access to all your accounts, indicators, expert advisors)
- **Terminal** window (quick access to the trading and account history, list of open positions and placed orders, client terminal log-file and internal mailbox).



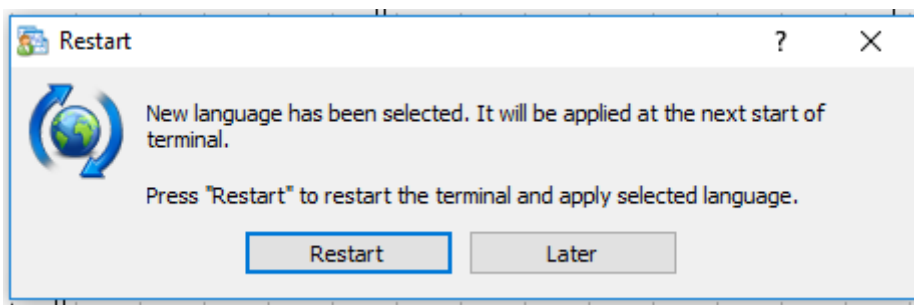


Change Language

- You can change the language of the MT4 platform by clicking on **View → Languages → Select the language you want**



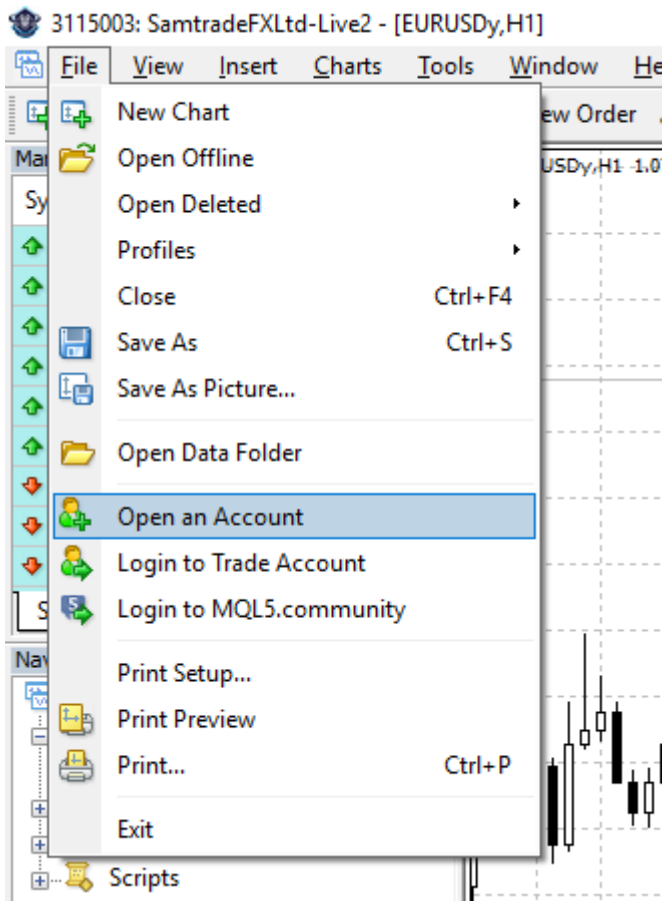
- Press **“Restart”** to apply the selected language





Open Demo Account

- Client is able to create a Demo Account by clicking on **File** → **Open an Account**





Open Demo Account

- Select **Samtrade-Demo** server and click **Next**.

Open an Account ? ×

Trading Servers
Select a more suitable trading server:

Address	Company	Ping
Samtrade-Demo	Samtrade FX Ltd	167.43 ms
Samtrade-Live	Samtrade FX Ltd	164.71 ms
add new broker like 'BrokerName' or address mt.company.com:443		

Scan

Next > Cancel



Open Demo Account

- Select **New demo account** server and click **Next**.

Open an Account ? X

Select account type
To start working an account is required:

To start working, you need a valid trade account. If you don't have it, you can create a demo or real account by selecting the corresponding option below and pressing 'Next':

Existing trade account

Login:

Password: Save password

Server: Samtrade-Demo

New demo account

New real account

< Back **Next >** Cancel



Open Demo Account

- Fill in the required information
- Check the box “**I agree to subscribe to your newsletters**” and click **Next**.

Open an Account

Personal details
To open an account, please fill out all the following fields:

Name:

E-Mail:

Phone:

Account type:

Deposit: USD

Leverage:

I agree to subscribe to your newsletters

< Back **Next >** Cancel



Open Demo Account

- You will receive your **login and password** to trade on our demo account
- Click **Finish** to gain access to your demo account.
- Your demo account platform will start up and displays the main trading window.

Open an Account ? ×

Registration
Wait a little, please

Name: Your Name
Account Type: demoWL_ST (1:100)
Deposit: 100000
Server: Samtrade-Demo

Login: **232424**
Password: **4solpru**
Investor: **ub8sgur** (read only password)

Please keep your username and passwords in a safe place.

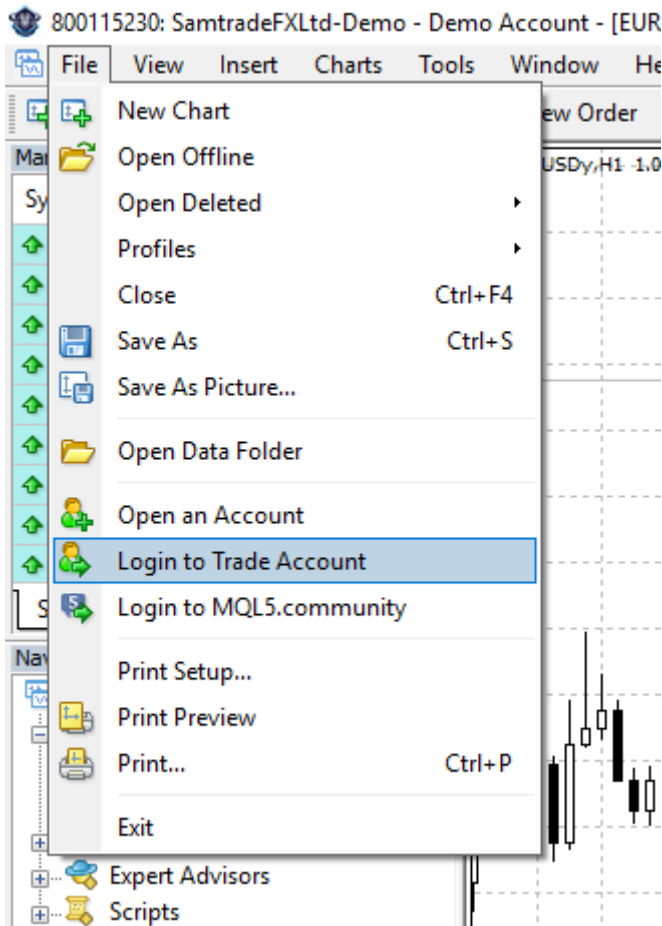
< Back Finish Cancel



Login to Demo Account

- To login to your demo MT4 Account, click on

File → Login to Trade Account.





Login to Demo Account

- Key in your MT4 **Login ID** and **Password** that was provided to you.
- Select Server “**Samtrade-Demo**”
- Click on “**Login**” to login to your account.

Happy Trading!

Samtrade MetaTrader 4 Terminal ? X

Authorization allows to get access to the trade account

Login: 232424

Password: ●●●●●●●

Server: Samtrade-Demo

Save account information

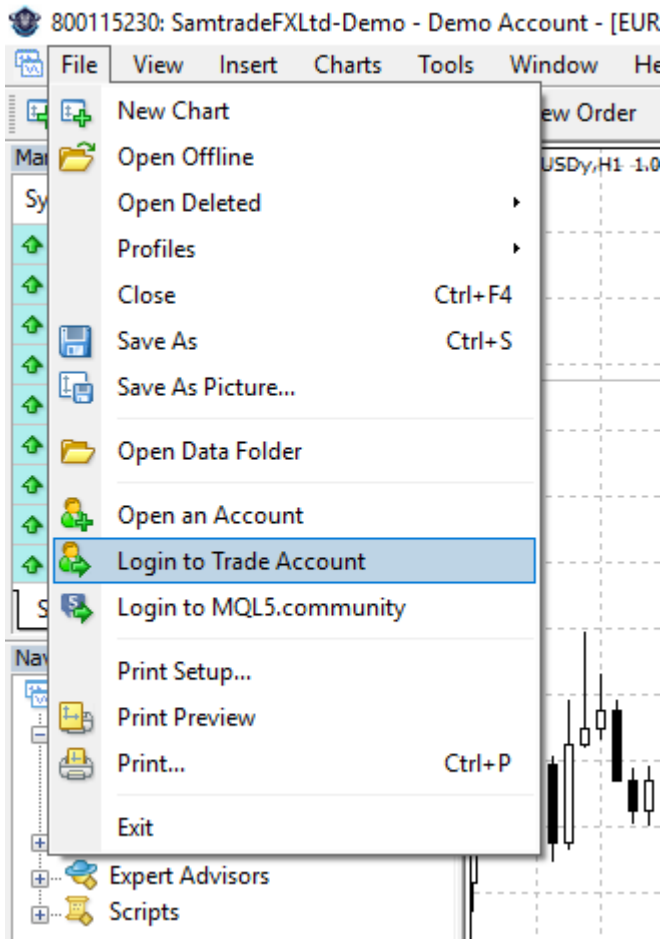
Login Cancel



Login to Live Account

- To login to your Live MT4 Account, click on

File → Login to Trade Account.





Login to Live Account

- Key in your MT4 **Login ID** and **Password** that was provided to you.
- Select Server “**Samtrade-Live**”
- Click on “**Login**” to login to your account.

Happy Trading!

The screenshot shows a window titled "Samtrade MetaTrader 4 Terminal" with a help icon and a close button. Inside the window, there is a lock icon and the text "Authorization allows to get access to the trade account". Below this, there are three input fields: "Login:" with the value "303141", "Password:" with ten black dots, and "Server:" with the value "Samtrade-Live". There is also a checked checkbox for "Save account information". At the bottom, there are two buttons: "Login" and "Cancel".